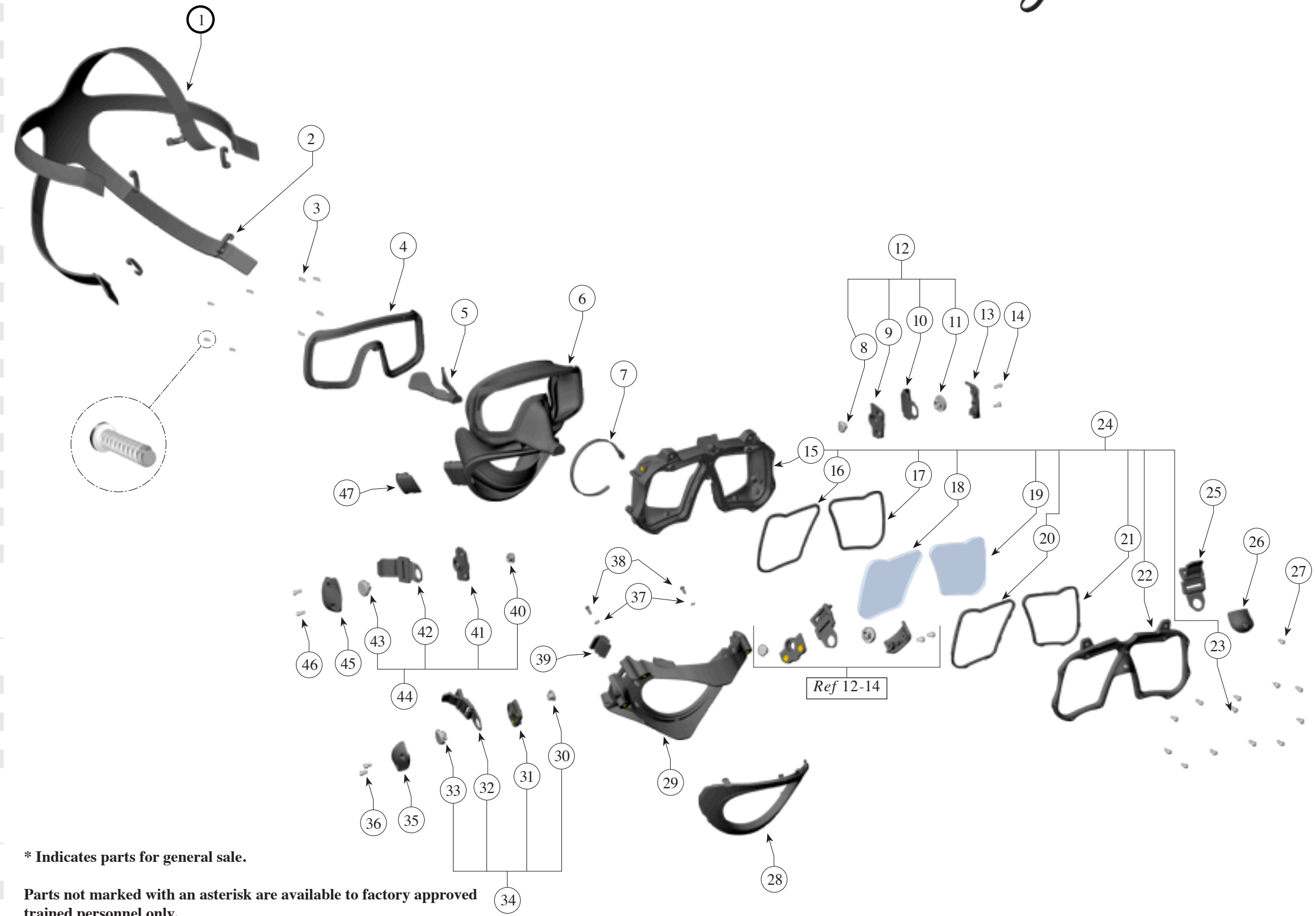


**Mask, M-48 Mod-1, No Pod/Non Magnetic**  
**P/N 805-175**

Location #	Part #	Description	
1	*810-007	Mask Strap	
2	*820-225	Strap Keeper	
3	830-050	Screw	
4	820-235	Skirt Lens Body Retainer	
5	*805-130	Nose Pinch Assembly	
6	810-008	Mask Skirt	
7	*820-091	Low Profile Tie Wrap	
8	820-025	Lock Plug	Order
9	820-227	Buckle Mount Plate, Left	Complete
10	805-008	Buckle Assembly, Metal/Plastic	Location
11	820-026	Buckle Tab Hold Plug	# 12
12	*805-155	Buckle Assembly, Metal/Plastic, Left	
13	*820-233	Buckle Cap, Left	
14	*830-014	Screw	
15	820-220	Lens Body	
16	810-150	Lens Gasket, Right	
17	810-151	Lens Gasket, Left	
18	865-010	Lens, Right	
19	865-011	Lens, Left	
20	820-223	Lens Keeper, Right	
21	820-224	Lens Keeper, Left	
22	820-238	Lens Keeper Retainer	
23	*830-011	Screw	
24	805-140	Lens Body Assembly	
25	805-008	Buckle Assembly, Metal/Plastic	
26	*820-230	Buckle Cap, Top	
27	*830-011	Screw	
28	820-041	Jaw Frame Retainer	
29	820-036	Jaw Frame	
30	820-025	Lock Plug	Order
31	820-226	Buckle Mount Plate, Right	Complete
32	805-028	Buckle Assembly, Metal/Plastic	Location
33	820-026	Buckle Tab Hold Plug	# 34
34	*805-154	Metal/Plastic Buckle Assembly, Right	
35	*820-232	Buckle Cap, Right	
36	*830-014	Screw	
37	330-205	Washer	
38	*830-011	Screw	
39	820-045	Pod Catch	
40	820-025	Lock Plug	Order
41	820-226	Buckle Mount Plate, Right	Complete
42	805-008	Buckle Assembly, Metal/Plastic	Location
43	820-026	Buckle Tab Hold Plug	# 44
44	*805-154	Buckle Assembly, Metal/Plastic, Right	
45	820-232	Buckle Cap, Right	
46	*830-014	Screw	
47	*820-155	Comm Port Plug	



\* Indicates parts for general sale.

Parts not marked with an asterisk are available to factory approved trained personnel only.

NOTE: The Mod-1 mask is generally sold/ordered in one of either two configurations:

**Option Available**

*805-015	Scuba Pod
----------	-----------

800-150 M-48 Mod-1 w/Pod, No Regulator  
 800-151 M-48 Mod-1 w/Pod, with Regulator



Kirby Morgan Dive Systems, Inc.<sup>®</sup> 1430 Jason Way, Santa Maria, CA 93455

Phone: 805/928-7772 Fax: 805/928-0342

www.KirbyMorgan.com e-mail: kmdsi@KirbyMorgan.com