



# Kirby Morgan 18 A/B & 28 Band Mask

Location Number	Order No.	Description
1	510-509	Head Harness (Spider)
2	525-740	KMB Hood Assembly
3	545-015	Nose Block Device
	510-575	Nose Block Pad
4	520-020	Valve Body
5	510-550	Valve, Oral Nasal
6	530-060	Screw ( 18 only)
7*	510-490	O-Ring (18 only)
	510-211	O-Ring (28 & pre '99 18)
8*	550-081	Regulator Mount Nut (18 only)
	550-038	Regulator Mount Nut (28 & pre '99 18)
9	510-747	Oral Nasal Mask
10	515-005	Earphone, Right
11	515-006	Earphone, Left
	510-542	Earphone Cover set
	515-008	Speaker
	520-015	Speaker Protector
12	515-009	Microphone
13	515-030	Communications Set
14	520-051	Comfort Insert (18 only)
15	530-095	Screw
16	545-007	Top Band
17*	520-056	Mask, Fiberglass (18 only)
	520-055	Mask, Fiberglass (18 only, pre '99)
	520-125	Mask,Frame (28,1")
	520-096	Mask,Frame (7/8")
18	530-535	Washer
19	530-415	Washer
20	530-317	Nut
21	545-016	Air Train
21a	510-762	Air Train Gasket <b>KMB 18 ONLY</b>
22	530-317	Nut
23	530-535	Washer
24	545-065	Standoff (28 only)
25	530-050	Screw
26	510-260	O-Ring
27	520-004	Face Port (18 only)
	520-128	Face Port (28 & pre 1979 18's only)
28	560-070	Port Retainer
28n	550-116	Nose Block Guide
29	530-052	Screw, Port Plug
30	530-035	Screw
31	510-010	O-Ring
32	510-008	O-Ring
33	555-180	Packing Nut
34	550-062	Knob, Nose Block
35	525-752	Tri-Valve™ Exhaust (35a-35i)
35a	510-786	Starboard Whisker™
35b	510-787	Port Whisker™
35c	510-761	Tri-Valve Exhaust Main Body
35d	520-200	Whisker™ Exhaust Valve Insert
35e	510-776	Exhaust Valve
35f	520-042	Tie Wrap
35g	520-118	Tri/Quad Valve Whisker Clamp
35h	530-008	Brass Screw
35i	530-009	Brass Nut
36	550-061	Spacer
37	540-015	Plate
38	530-045	Screw
39*	545-080	Reg. Body, SuperFlow 350 (18 only)
	545-022	Regulator Body (28 pre 2004& pre 99 18 only)
40	550-060	Piston
41	535-807	Spring Set
42	550-059	Spacer
43	550-057	Shaft

Location Number	Order No.	Description
44	520-032	Washer
45	510-011	O-Ring
46	550-055	Packing Nut
47	550-053	Knob, Adjustment
48	530-601	Retaining Pin
49	530-030	Screw
50	545-020	Clamp
51	545-018	Cover Assembly
51a	535-905	Retaining Clip
51b	540-055	Cover
51c	535-810	Spring, Purge Button
51d	520-017	Purge Button
51e*	520-078	Purge Button Sticker (18 only)
	520-077	Purge Button Sticker (28 & pre '99 18)
52	510-553	Diaphragm
53	530-303	Nut
54	550-052	Spacer
55	545-038	Roller Lever
56	530-506	Washer
57*	530-505	Washer (pre '04 28 & pre '99 18)
58*	535-804	Spring (pre '04 28 & pre '99 18)
59	545-026	Inlet Valve
60	510-014	O-Ring
61a	550-046	Inlet Nipple, "A"
61b	550-048	Inlet Nipple, "B"
61c	550-050	Jam Nut, "B"
62	510-552	Exhaust Valve
62a	540-122	Exhaust Flange, Chrome
62b	510-401	Gasket
62c	530-020	Screw
63a	505-026	Demand Regulator Assem. 18 "A" (7/8")
63b*	505-027	Demand Reg Assem. "B" (28 pre '05 & pre '99 18) (7/8")
	505-069	Demand Reg Assem. 350 18 "B", 28 (1")
63c	505-028	Reg Adjustment Assem.
64	530-021	Screw
65	545-024	Exhaust Cover (18)
	545-041	Exhaust Cover (28)
66	510-561	Main Exhaust Valve
67	550-063	Exhaust Body (18 only)
68	545-009	Bottom Band
69	530-035	Screw (18 only)
70	550-040	Nut
71	530-308	Hex Nut
72	530-525	Washer
73	515-035	Communications Post
74	510-481	O-Ring
75	550-043	Plug
76	555-175	Packing Gland
77	520-113	Ferrule Set
78	555-178	Packing Nut
79	515-045	W.P. Connector, Male (4 pin)
79a	505-047	W.P. Connector Assem. complt.
80	515-049	Terminal
81	515-061	Terminal Block
82	550-019	Locknut
83	535-802	Spring
84	520-524	Knob, control
85	520-030	Washer
86	550-020	Bonnet
87	510-015	O-Ring
88	520-031	Washer
89	510-010	O-Ring
90	550-022	Valve Stem
91	550-023	Seat Assem.

Location Number	Order No.	Description
92	550-024	Stud - Side Block
93a	550-026	Side Block - "A" N/A
93b	550-029	Side Block - "B"
94	550-140	Emergency Valve Body
95	550-138	Stem
96	540-095	Washer
97	520-024	Packing
98	550-091	Packing Nut
99	520-525	Knob, Control
100	535-802	Spring
101	550-019	Locknut
102	505-070	Emergency Valve Assembly
103	555-195	One-Way Valve
104	555-117	Adapter, Brass, 1/4" NPT/0,
105		Seat
106		Wiper
107		O-Ring
108		O-Ring
109		Poppet
110		Spring
111		Body
112	510-483	O-Ring
113	505-060	One-Way Valve Assembly
114	550-095	L.P. Plug, w/O-ring
114b	310-003	O-Ring
115a	510-011	O-Ring
115b	520-033	O-Ring, Teflon
116	555-154	Bent tube Assembly
117a	510-010	O-Ring
117b	510-012	O-Ring
118a	555-152	Regulator Hose w/O-Rings
118b	555-155	Bent Tube Assem. w/O-Rings
119a	505-022	"A" Side Block Assem. Complt.-N/A
119b	505-024	"B" Side Block Assem. Complt.
120	540-175	Bottom BandKeeper® Attachment Plate
120a	540-182	Bottom BandKeeper® Mount
121	530-073	Screw
122a	540-171	Top BandKeeper® Mount
122b	540-179	Top BandKeeper® Attachment Plate
122c	530-073	Screw
123	530-040	Screw
124	530-062	Screw
	525-620	Tool Kit (not shown)

**⚠ CAUTION**

Use only Kirby Morgan original replacement parts. The use of other manufacturer's parts will interfere with the performance characteristics of your life support equipment and may jeopardize your safety. Additionally, any substitutions will void any warranties offered by KMDSI. When ordering spares, always insist on Kirby Morgan original parts.

### Product Changes

Following publication of this booklet, certain changes in standard equipment, options, prices and the like may have occurred which would not be included in these pages. Your Authorized KMDSI dealer is your best source for up-to-date information on any of these products. © Kirby Morgan Dive Systems, Inc. reserves the right to change product specifications at any time without incurring obligations.

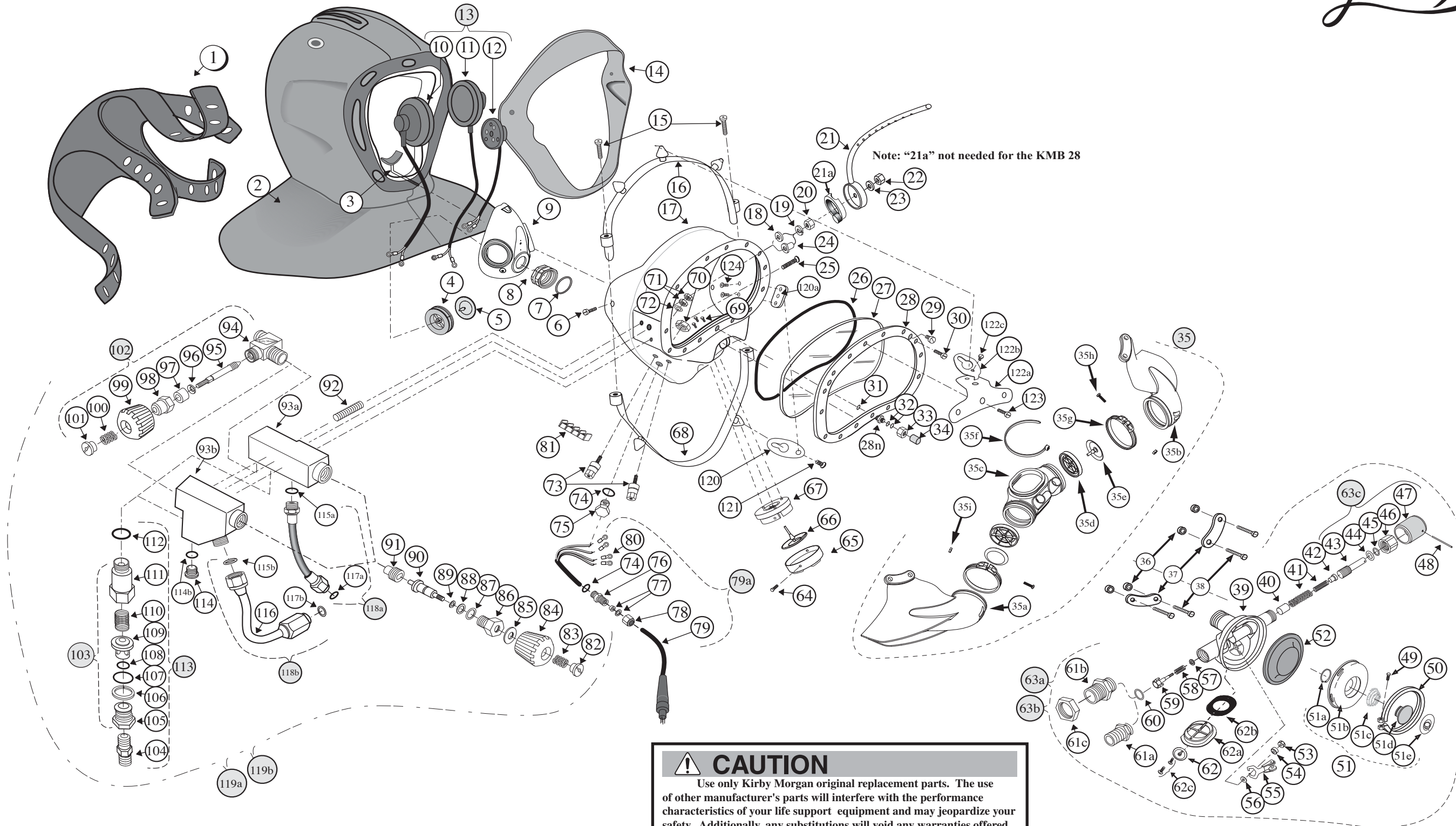


Kirby Morgan Dive Systems, Inc.® 1430 Jason Way, Santa Maria, CA 93455

Phone: 805/928-7772 Fax: 805/928-0342

www.KirbyMorgan.com e-mail: kmdsi@KirbyMorgan.com

# Kirby Morgan 18 A/B & 28 Band Mask



**⚠ CAUTION**  
 Use only Kirby Morgan original replacement parts. The use of other manufacturer's parts will interfere with the performance characteristics of your life support equipment and may jeopardize your safety. Additionally, any substitutions will void any warranties offered by KMDSI. When ordering spares, always insist on Kirby Morgan original parts.

\* As of January 1, 1999, all KMB 18B's are manufactured with the large tube SuperFlow 350 Regulators, part number 505-069, and a new frame part number 520-056. The large tube regulator cannot be retrofitted into pre '99 KMB 18B's without the purchase of a new frame. Small tube fiberglass frames, Part number 520-055, are available as replacement parts (see 17)



Kirby Morgan Dive Systems, Inc.<sup>®</sup> 1430 Jason Way, Santa Maria, CA 93455  
 Phone: 805/928-7772 Fax: 805/928-0342  
[www.KirbyMorgan.com](http://www.KirbyMorgan.com) e-mail: [kmdsi@KirbyMorgan.com](mailto:kmdsi@KirbyMorgan.com)