

# SuperLite<sup>®</sup> 27<sup>®</sup> Helmet

Location Number	Order No.	Description
1	550-019	Locknut
2	535-802	Spring
3	520-524	Knob, Control
4	520-030	Washer
5	550-020	Bonnet
6	510-015	O-Ring
7	520-031	Washer
8	510-010	O-Ring
9	550-022	Valve Stem
10	550-023	Seat Assembly
11	550-024	Stud
12	550-029	Side Block
13	520-033	O-Ring, Teflon
14	555-154	Bent tube Assembly
15	510-012	O-Ring
16	555-155	Bent Tube Assem. w/O-Rings
17	550-095	L. P. Plug, w/O-ring
18	310-003	O-Ring
19	550-140	Emergency Valve Body
20	550-138	Stem
21	540-095	Washer
22	520-024	Packing
23	550-091	Packing Nut
24	520-525	Knob, Control
25	535-802	Spring
26	550-019	Locknut
27	505-070	Emergency Valve Assembly
28	510-483	O-Ring
29	Body	For Replacement Parts Order Kit #525-330
30	Spring	Order Complete see Loc. # 37
31	Poppet	
32	O-Ring	
33	O-Ring	
34	Wiper	
35	Seat	
36	555-117	Adapter, Brass, 1/4" NPT/0 <sub>2</sub>
37	555-195	One-Way Valve
38	505-060	One-Way Valve Assem.
39	505-024	Side Block Assem. Complete (B)
40	510-682	Head Cushion
	510-654	Head Cushion Bag
41	510-683	Chin Cushion
	510-639	Chin Cushion Bag
	510-672	Replacement Foam Kit
42	540-054	Earphone Retainer
43	530-018	Screw
44	530-527	Washer
45	530-519	Washer
46	530-018	Screw
47	530-702	Snap
48	510-490	O-Ring
49	550-081	Nut, Regulator Mount
50	510-747	Oral Nasal Mask, Silicone
	510-569	Oral Nasal Mask (small <b>optional</b> )
51	545-070	Nose Block Device
	510-575	Nose Pad
52	510-550	Valve, Oral Nasal
53	520-020	Valve Body
54	530-015	Screw
55	530-070	Screw
56	530-540	Washer
57	525-225	Diamond Weight kit, <b>optional</b>
57a	530-540	Washer
57b	530-062	Screw
58	505-105	Helmet, Fiberglass w/Ring
59	560-106	Handle
60	530-045	Screw
61	560-081	Side Weight (Port)
61a	530-062	Screw

Location Number	Order No.	Description
62	530-070	Screw
63	530-540	Washer
64	530-535	Washer
65	530-415	Washer
66	530-317	Nut
67	545-016	Air Train
67a	510-762	Air Train Gasket
68	530-535	Washer
69	530-317	Nut
70	530-050	Screw
71	530-032	Screw
72	550-350	Water Dump Body
73	510-557	Water Dump Valve
73a	820-120	Valve Body, Purge (included in #74)
73b	810-025	Valve Purge (included in #74)
74a	510-780	Water Purge Deflector (included in #74)
74	505-726	Water Purge Deflector Complete
75	520-042	Tie Wrap
76	510-260	O-Ring
77	520-004	Face Port (Lexan)
78	560-070	Port Retainer Assembly
79	530-052	Screw, Port Plug
80	530-035	Screw
81	510-010	O-Ring
82	510-008	O-Ring
83	550-116	Nose Block Guide
84	555-180	Packing Nut
85	550-062	Knob, Nose Block
86	525-755	Tri-Valve Exhaust Assy, 27
86a	510-759	Exhaust Main Body
86b	510-786	Starboard Whisker, 27
86c	510-787	Port Whisker, 27
86d	520-200	Whisker Exhaust Valve Insert
86e	510-776	Exhaust Valve
86f	520-042	Tie Wrap
86g	520-118	Tri/Quad Valve Whisker Clamp
86h	530-008	Brass Screw
86i	530-009	Brass Nut
87	550-061	Spacer
88	540-015	Plate
89	530-045	Screw
90	545-080	Regulator Body (SuperFlow 350)
91	550-060	Piston
92	535-807	Spring Set
93	550-059	Spacer
94	550-057	Shaft
95	520-032	Washer
96	510-011	O-Ring
97	550-055	Packing Nut
98	550-053	Knob, Adjustment
99	530-601	Retaining Pin
100	510-553	Diaphragm
101	545-018	Cover Assembly
101a	535-905	Retaining Clip
101b	540-055	Cover
101c	535-810	Spring, Purge Button
101d	520-017	Purge Button
101e	520-078	Purge Button Sticker
102	530-030	Screw
103	545-020	Clamp
104	510-552	Exhaust Valve
104a	530-020	Screw
104b	540-122	Exhaust Flange, Chrome
104c	510-401	Gasket
105	550-052	Spacer

Location Number	Order No.	Description
105a	530-303	Nut
106	545-038	Roller Lever
107	530-506	Washer
108	550-050	Jam Nut
109	550-048	Inlet Nipple
110	510-014	O-Ring
111	545-026	Inlet Valve
112	505-069	Demand Regulator Assem.
112a	505-028	Adjustment Knob Assem.
113	530-035	Screw
114	530-546	Washer
115	550-061	Spacer
116	540-086	Swing Catch (after 1994)
	525-106	Swing Catch Retro Fit Kit (pre 1994 upgrade)
117	520-167	Washer
118	535-825	Spring
119	530-032	Screw
120	550-122	Spring Spacer
121	530-045	Screw
122	505-110	Sealed Pull Pin
	525-210	Sealed Pull Pin Retro Fit Kit
123	515-018	Earphone, Right
124	515-019	Earphone, Left
	510-542	Earphone Cover set
	515-008	Speaker
	520-015	Speaker Protector
125	515-029	Microphone
126	515-033	Communications Set
127	515-055	Wiring Harness
128	330-035	Washer
129	330-030	Screw
130	510-630	Rubber Cover
131	530-525	Washer
132	530-308	Nut
133	550-040	Mount Nut
134	520-130	Comm Module/ Drilled For Posts
	520-132	Comm Module/ For WP Conn.
135	510-029	O-Ring
136	315-020	Communications Post
137	515-049	Terminal
138	510-481	O-Ring
139	555-175	Packing Gland
140	520-113	Ferrule Set
141	555-178	Packing Nut
142	515-045	Waterproof Conn, Male
143	505-047	W.P. Connector Assembly
144	515-023	Comm Assembly w/Posts
	515-024	Comm Assembly w/W.P Conn.
145	320-026	Comm Mount Nut
146	510-450	O-Ring
147	540-105	Split Ring, (2 Required)
148	510-504	Neck Dam, Neoprene
	510-500	Neck Dam, Latex <b>optional</b>
149	560-078	Stepped Ring
150	505-142	Pull Strap Assembly
151	540-115	Strap Plate
152	530-220	Screw
153	530-024	Screw
154	505-111	Chin Strap Assembly
		Purchase 525-716 Kit
155	530-031	Screw
156	505-100	Neck Ring Assembly, Complete

Location Number	Order No.	Description
	505-095	N. R. Assem., Complete (Latex) <b>optional</b>
157	530-545	Washer
158	520-165	Washer
159	530-027	Hinge Bolt
160	530-028	SS Nut
161	560-111	Locking Collar
162	550-113	Mount Nut
163	530-547	Washer
164	520-156	Neck Pad w/#165 (2)
165	550-045	T-Washer
166	530-064	Screw
167	250-060	Adjustment Nipple
168	210-050	O-Ring
169	550-533	Bent Tube Adapter
170	510-017	O-Ring
171	545-570	S.S. Reg Body Assy.
172	510-768	Spacer for 27
173	510-015	O-Ring
174	520-023	Bearing Clip
175	550-517	Main Tube
176	205-015	Inlet Valve Assy.
177	210-045	Seat
178	220-050	Inlet Valve
179	235-015	Spring
180	220-030	Balance Spacer
181	505-562	Flex Knob Assy.
182	520-517	Flex Knob
183	550-523	Adjustment Shaft
184	510-012	O-Ring
185	550-526	Packing Nut
186	510-017	O-Ring
187	210-055	Balance O-Ring
188	540-545	Lever Arm
189	540-531	Lock Clip
190	205-010	Diaphragm Assy.
191	560-525	Cover Retaining Ring
192	210-043	Cover
193	530-052	Screw
194	530-527	Washer
195	510-019	O-Ring
196	520-022	Exhaust Valve Insert
197	540-012	Retainer Ring
198	510-776	Exhaust Valve
199	505-560	Stainless Steel Regulator Assy.
	525-620	Tool Kit (not shown)

### Product Changes

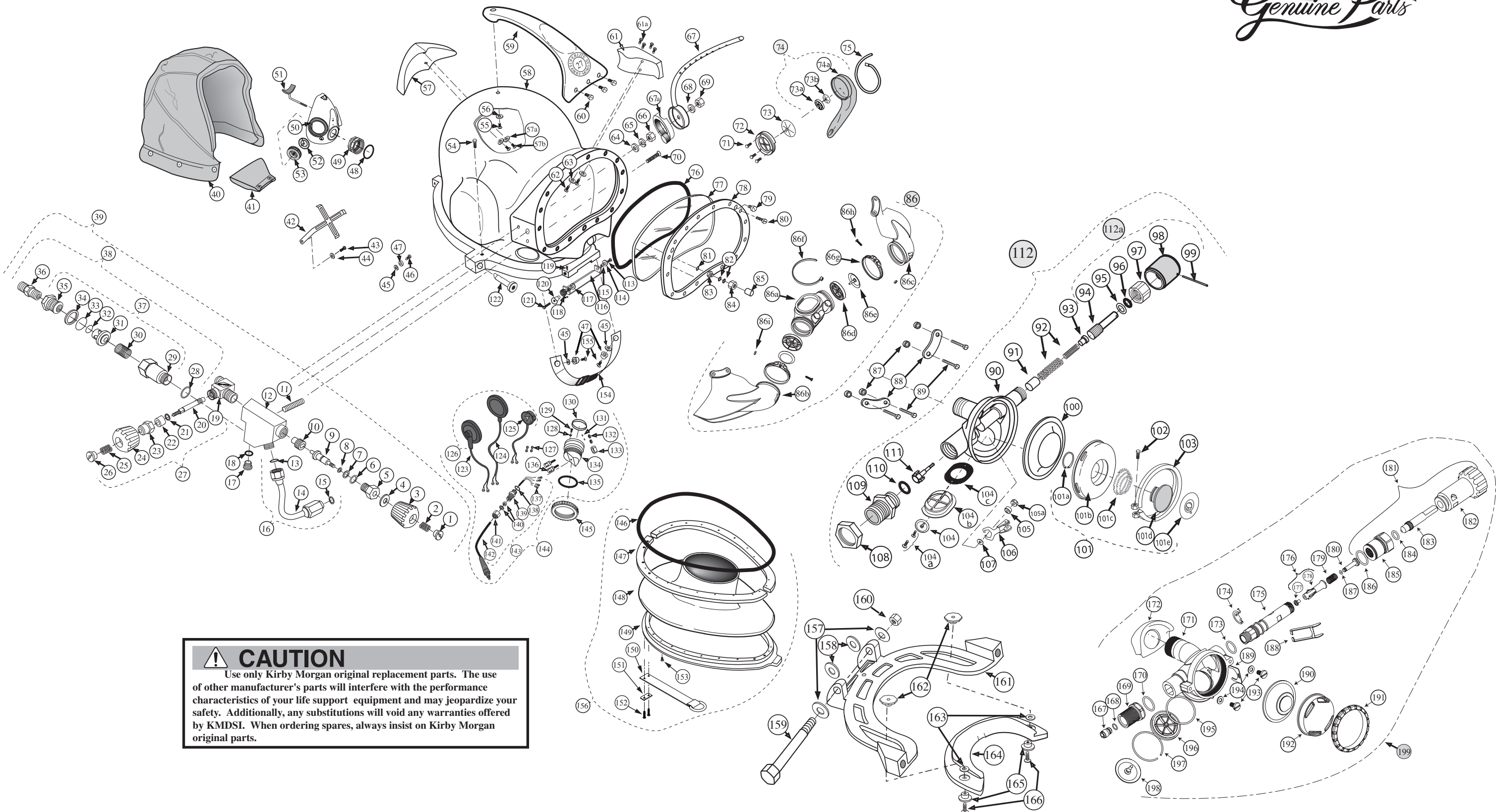
Following publication of this booklet, certain changes in standard equipment, options, prices and the like may have occurred which would not be included in these pages. Your Authorized KMDSI dealer is your best source for up-to-date information on any of these products. © Kirby Morgan Dive Systems, Inc. reserves the right to change product specifications at any time without incurring obligations.

**⚠ CAUTION**  
 Use only Kirby Morgan original replacement parts. The use of other manufacturer's parts will interfere with the performance characteristics of your life support equipment and may jeopardize your safety. Additionally, any substitutions will void any warranties offered by KMDSI. When ordering spares, always insist on Kirby Morgan original parts.



**Kirby Morgan Dive Systems, Inc.** 1430 Jason Way, Santa Maria, CA 93455  
 Phone: 805/928-7772 Fax: 805/928-0342  
[www.KirbyMorgan.com](http://www.KirbyMorgan.com) e-mail: [kmdsi@KirbyMorgan.com](mailto:kmdsi@KirbyMorgan.com)

# SuperLite<sup>®</sup> 27<sup>®</sup> Helmet



**⚠ CAUTION**  
 Use only Kirby Morgan original replacement parts. The use of other manufacturer's parts will interfere with the performance characteristics of your life support equipment and may jeopardize your safety. Additionally, any substitutions will void any warranties offered by KMDSI. When ordering spares, always insist on Kirby Morgan original parts.



Kirby Morgan Dive Systems, Inc.<sup>®</sup> 1430 Jason Way, Santa Maria, CA 93455

Phone: 805/928-7772 Fax: 805/928-0342

[www.KirbyMorgan.com](http://www.KirbyMorgan.com) e-mail: [kmdsi@KirbyMorgan.com](mailto:kmdsi@KirbyMorgan.com)